



**Coaxial Dynamics**

A CDI INDUSTRIES, INC. COMPANY  
SPECIALISTS IN RF TEST EQUIPMENT & COMPONENTS

6800 Lake Abram Drive  
Middleburg Heights, OH 44130  
Telephone: (440) 243-1100  
Fax: (440) 243-1101  
Web Site: www.coaxial.com  
E-mail: sales@coaxial.com

# 86500 SERIES HEAT EXCHANGERS

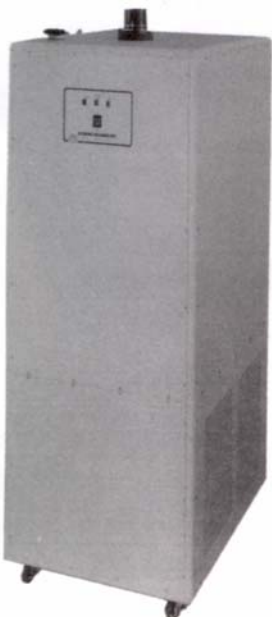
## Self Contained Water Loads

### Models 86505 & 86512



SPECIFICATIONS		
Model	86505	86512
Power Rating (CW)	5 kW	10 kW
Impedance	50 Ohms Nominal	
Frequency Range	DC to 800 MHz	
VSWR	1.10 : 1 to 800 MHz	
Input Connector	Quick Match, 1-5/8" or 3-1/8"	
AC Power Required	110 VAC, 60 Hz or 230 VAC, 50/60 Hz, 1 Phase	
Nominal Dimensions (Including Connector)	28" x 19-1/2" x 20" 71cm x 50cm x 51cm	33-1/2" x 21-1/2" x 21-1/2" 85cm x 55cm x 55cm
Nominal Weight	80 lbs. (36 kg)	100 lbs. (46 kg)
Finish	Textured Beige	

### Model 86527



SPECIFICATIONS	
Power Rating (CW)	25 kW
Impedance	50 Ohms Nominal
Frequency Range	60 Hz to 800 MHz
VSWR	1.10 : 1 to 800 MHz
Input Connector	3-1/8"
AC Power Required	110 VAC, 60 Hz or 230 VAC, 50/60 Hz, 1 Phase
Nominal Dimensions (Including Connector)	24-1/4" x 29-3/4" x 55-3/4" 62cm x 76cm x 142cm
Nominal Weight	230 lbs. (104 kg)
Finish	Textured Beige

# 86500 SERIES HEAT EXCHANGERS

## Self Contained Water Loads

### Models 86552 & 86553



SPECIFICATIONS	
Power Rating (CW)	50 kW
Impedance	50 Ohms Nominal
Frequency Range	60 Hz to 800 MHz
VSWR	1.10 : 1 to 800 MHz
Input Connector	3-1/8" or 6-1/8"
AC Power Required	230 VAC, 60 Hz (50 Hz available)
Nominal Dimensions (Including Connector)	31-1/2" x 44" x 54-1/2" 80cm x 112cm x 138cm
Nominal Weight	Approx. 400 lbs. (182 kg)
Finish	Textured Beige

### Models 86580 & 86581



SPECIFICATIONS	
Power Rating (CW)	80 kW
Impedance	50 Ohms Nominal
Frequency Range	60 Hz to 800 MHz
VSWR	1.15 : 1 to 800 MHz
Input Connector	3-1/8" or 6-1/8"
AC Power Required	230 VAC, 60 Hz (50 Hz available)
Nominal Dimensions (Including Connector)	34" x 75" x 67" 86cm x 191cm x 170cm
Nominal Weight	Approx. 700 lbs. (318 kg)
Finish	Textured Beige